

# te ātea

A common place, a place where everyone is welcome;

A collaborative and creative urban space for our Tauranga community to gather, interact, and exchange goods, ideas and kai;

The idea of varying scales and occupiable flexible spaces to facilitate artists / events / exchange / displays either for the entire event or temporarily. E.g. 'bump spaces' and small 'booths' within the laneway for artists to display works / exchange ideas / buy and sell artwork / stages for performance

## experiential



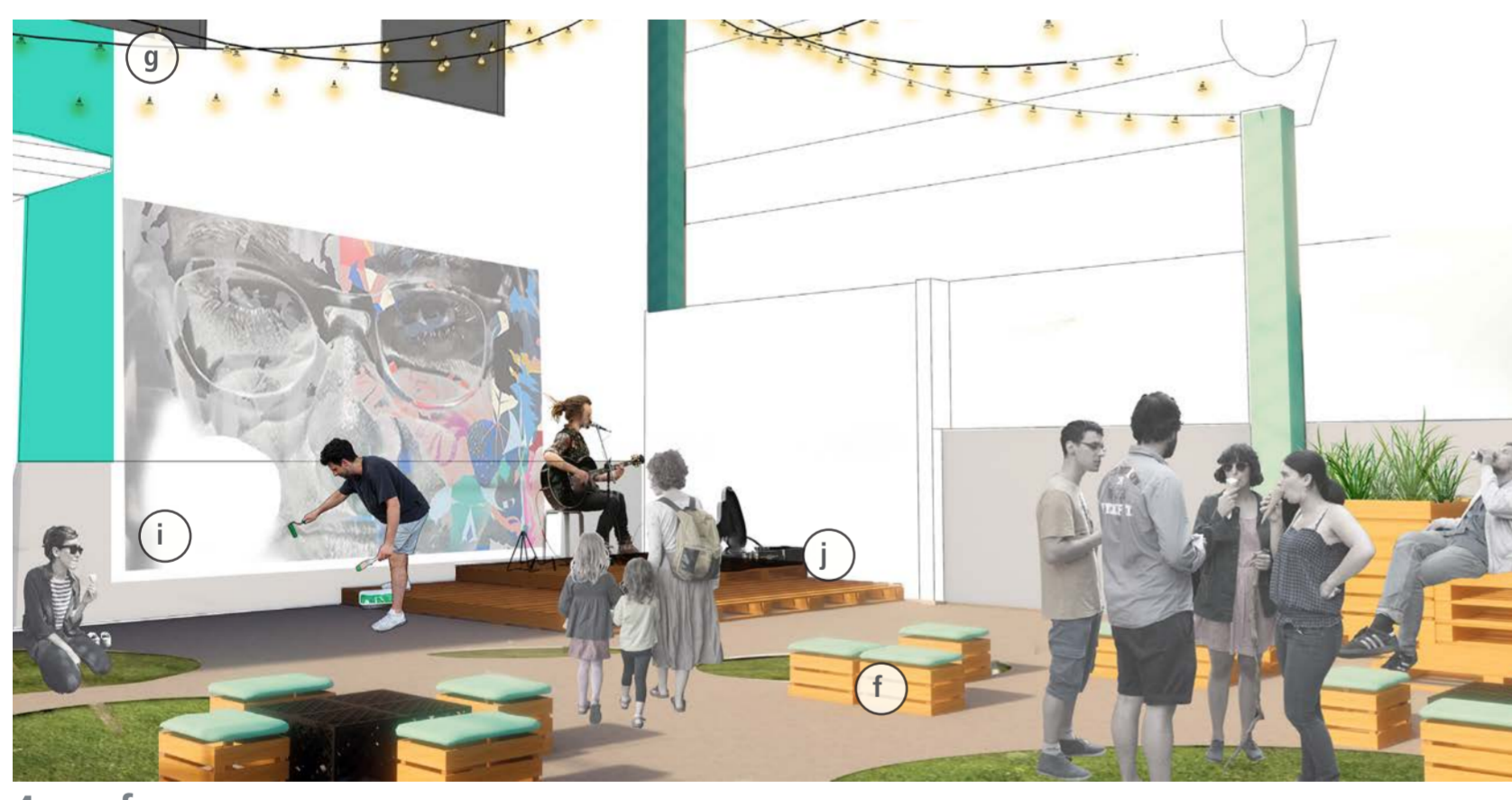
**1. entrance**  
portal into space • framing the entrance



**2. gallery**  
frames – flexible – rotating • structure & fluidity • people move through • experience • interactive



**3. transition**  
informal • overflow from gallery • pause for change in volume • spill out seating if required • change in feeling

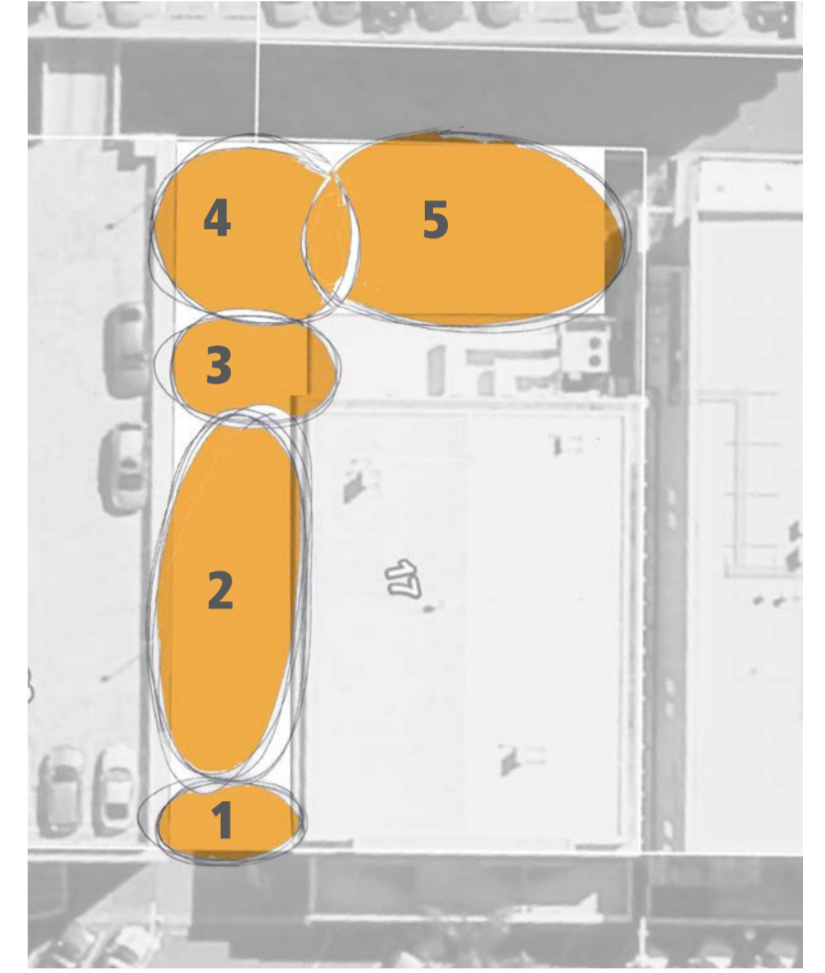


**4. performance**  
temporary stage • potential for active art piece • raised platform for informal seating if required • interactive zone for artists / exhibits



**5. eat/kai**  
people eating – mingle – gather • raised seating • viewing performances & projection

## spatial framework



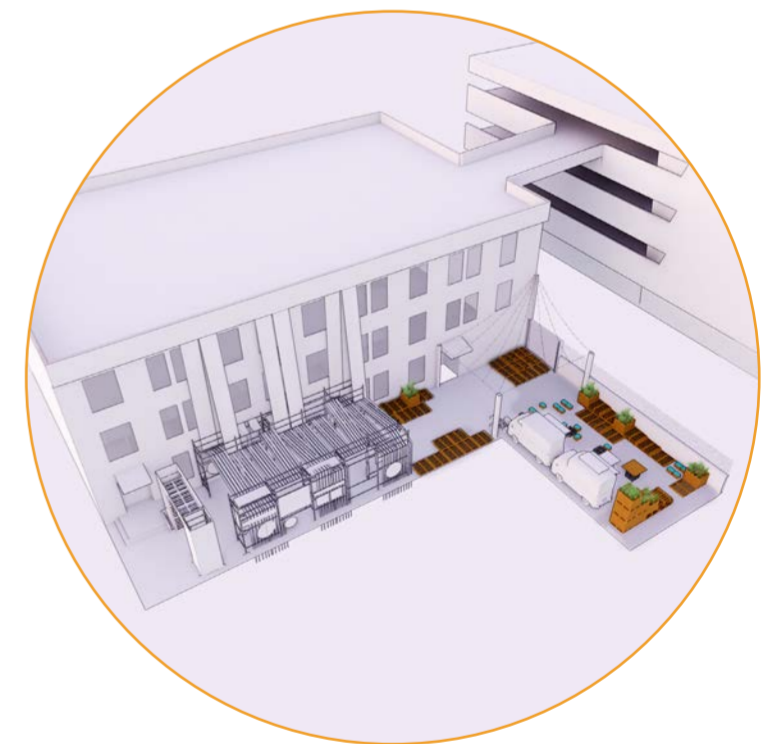
### legend

- (a) framed portal entry to atea constructed from donated timber pallets and planted with donated nursery plants endemic to Tauranga moana
- (b) 'pouwhenua' scaffolding tower wrapped in fabric with mahi toi pattern by local artist. Potential to be backlit
- (c) fabric material tied to rooftop carpark, stretched & tied to scaffolding in laneway. Adds vibrancy & colour, creates a sense of volume and will project laneway presence to the wider city. Potential for public engagement with more material added at low level, weaving or painting and screenprinting.
- (d) plywood rotating or static screens attached to scaffolding. To display art, signage or be used as tables for display of goods for exchange or sale.
- (e) scaffolding framing, able to incorporate open portions for 'stalls' or artists to occupy, can vary in size and frequency throughout the gallery due to flexible nature of scaffolding.
- (f) furniture that can be reordered and occupied by public as required for eating or viewing performance space
- (g) high level lighting above performance space, suspended from columns (either timber or scaffolding)
- (h) potential to have a projection onto carparking buildings blank facade (artist tbc). Can be interactive or static
- (i) opportunity for artist to create work in-situ throughout the event. Space can facilitate external creative groups eg The Roots Creative Entrepreneurs from Auckland.
- (j) stage that can be used for performances, informal seating, interactive zone for artists or exhibits
- (k) staggered to break up wall and provides eating for eating kai, viewing performances etc
- (l) can be accessed via stairs to spring street
- (m) food services with trucks & stalls

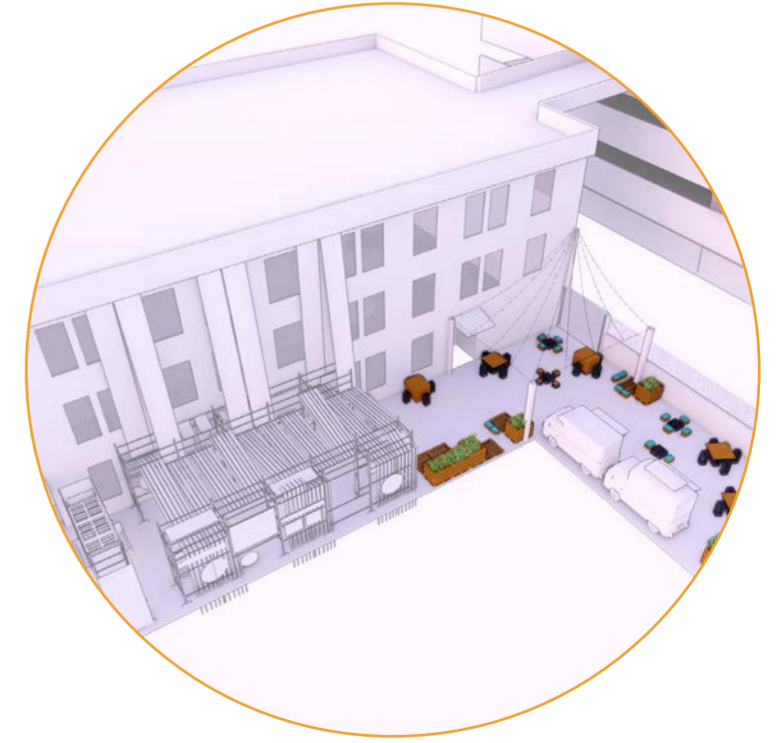
### future collaborators

- Linda Munn
- Maraea Timutimu
- Darcell Apelu
- Que Bidois
- Kalou
- Robyn Williams
- Owen Dippie
- mixed media
- mixed media
- moving image
- mixed media
- graphics
- graphics
- painter

## programming



entertainment & concert



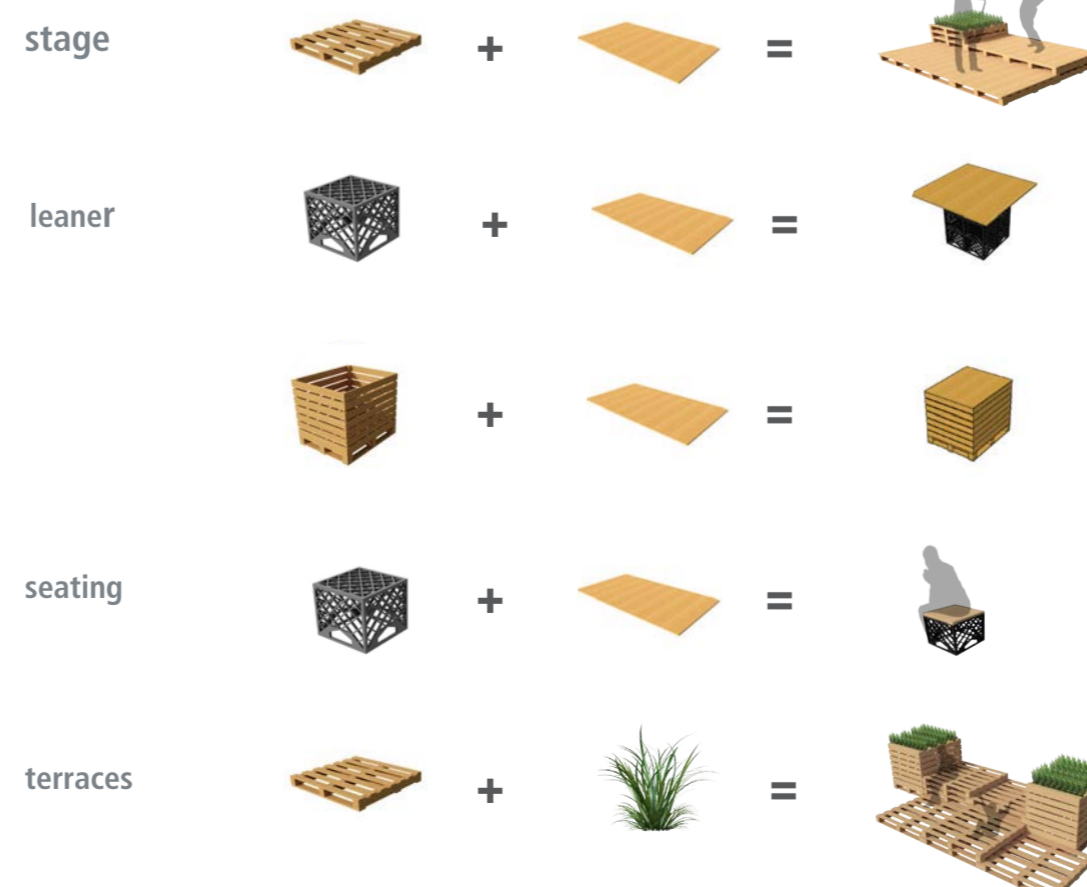
dining and night theatre

## toolkit

### materials



### furniture (re)assembly



### reuse & upcycle

- material**
  - schools for sewing,
  - decomposable weed matting
  - venue hire for drapery
  - if wind break material is used- returned to orchard
- seating (pallets / kiwifruit crates / plywood)**
  - kiwifruit crates can be returned
  - seating repurposed at our place / around the community
  - plywood donated to schools / playcentres / community facilities doing building
- rotating panels (plywood)**
  - Can be used as display boards throughout community / at our place
- stage (plywood & pallets)**
  - Stage donated to community group
  - Used at our place
- scaffold**
  - rented item returned to supplier
- lighting**
  - rented item returned to supplier