

---

ARCH —  
— ITEC —  
— TURE

---

WEEK —  
— 2016

---

HOUSING THE FUTURE  
AKLD — WGTN — CHCH  
19 — 25 SEPTEMBER  
[architectureweek.co.nz](http://architectureweek.co.nz)

---



New Zealand  
Institute of Architects  
Incorporated

Architecture Week is an initiative of the New Zealand Institute of Architects working in collaboration with a number of other organisations interested in improving the quality of our towns and cities.



**New Zealand  
Institute of Architects  
Incorporated**



'Housing the Future' - could a curlier theme be chosen for a week of architecture-related events and activities? Housing (whether it's the lack of, affordability, quality or type) is the word on everyone's lips and more often than not it's a word with the worrying suffix "crisis". As prospects for affordable home ownership diminish for many, difficult conversations are needed about how we design and build, the nature of our cities and how we live in them.

This year, Architecture Week, running concurrently in New Zealand's three main centres from 19-25 September, is a vehicle for a wide range of mostly free events that aim to promote discussion and debate about the future of housing design, quality and provision in Auckland, Christchurch and Wellington. You can attend a free talk, film, exhibition or debate, take a building tour, join a workshop or take part in a competition. There are events for people of all ages and all levels of architectural curiosity, activities to test the design mettle of professional and aspiring architects, and engaging activities for those who would simply like to become better acquainted with the nature of house design into the future. See you there!

Event booking and registration details can be found here: [architectureweek.co.nz](http://architectureweek.co.nz)



## KEYNOTE SPEAKER: STUART HARRISON [AUS]



This year's Architecture Week keynote speaker is Stuart Harrison, an Australian architect and widely published writer on design, architecture and urbanism. Stuart is a director of the award-winning Melbourne architecture firm Harrison and White (HAW) and a member of SLASH Projects, which recently won a design competition for a site at the Royal Adelaide Hospital. Stuart's work ranges across residential, educational, recreational, institutional and commercial architecture, as well as master planning and urban design. Across his career, he has developed significant expertise in ways of adapting existing buildings to new uses. He consults across Australia on design review and project formation, has taught at RMIT and Monash University, was co-founder and host of 'The Architects' (as seen left) on Melbourne's 3RRR Radio, and is the author of two very good books on housing, 'Forty-six Square Metres Doesn't Normally Become a House', an investigation of the potential of smaller housing typologies, and 'New Suburban', which examined the suburban type and ideal in Australian and New Zealand housing.

---

### AUCKLAND:

When: Monday 19 September, 6-7pm  
Where: AUT University, Sir Paul Reeves Building, Lecture Theatre WG403  
Cost: Free event (no ticket required)

---

### WELLINGTON:

When: Wednesday 21 September, 5.30-6.30pm  
Where: City Gallery Wellington  
Cost: Free event (no ticket required)

---

### CHRISTCHURCH:

When: Thursday 22 September, 6-7pm  
Where: Christchurch Arts Centre, Great Hall  
Cost: Free event (no ticket required)

# AUCKLAND

EVERY DAY 19-25/09

## SILO 6 EXHIBITIONS



**ARCHITECTURE+WOMEN•NZ TIMELINE:** Although women have been consistently present in New Zealand's architectural history, they are largely absent from the documented stories. The A+W•NZ Timeline, created by Marianne Calvelo, with help from Joy Roxas and Linda Simmons, fills some of these gaps. The timeline was first displayed in 'Between Silos', a 2013 exhibition at Wynyard Quarter. At Architecture Week 2016, the timeline returns to Silo Park. Produced by A+W•NZ in collaboration with the NZIA.



**THE PORTAL: MANUKAU/WYNYARD QUARTER:** Auckland's ambition to become 'the world's most liveable city' hinges on the vibrancy and culture of its hubs. However, sometimes these hubs grow independently and at different speeds. This digital portal between Manukau Civic Square and Silo Park at Wynyard Quarter aims to strengthen connections between central and south Auckland, showcase activities at both locations, and become a place for the exchange of ideas, concerns or initiatives. Brought to you by The Roots.




**LANDSCAPE AS INFRASTRUCTURE:** Where landscape exists, so does infrastructure. As Auckland continues to grow and intensify, increased importance will be placed on the function, flow and performance of its urban ecologies and systems. This exhibition showcases recent projects that engage the landscape's ability to inform, enable and transform infrastructure through design. Brought to you by the New Zealand Institute of Landscape Architects.



**CITY AS HOME:** This project, created by Antonia Lapwood and Maui 'Ofamo'oni, explores what home and habitation means when the constructive aspects of architecture and architectural process have been removed, reordered and reimagined. What emerges when the interiorisation of the city is lived by those we call the homeless?

**When:** 19-25 September  
**Where:** Silo 6 Gallery  
**Cost:** Free event (no ticket required)

 [fb.com/NZIA.AKL](https://www.facebook.com/NZIA.AKL)

 [@nzia\\_auckland](https://www.instagram.com/nzia_auckland)



## NEW CITY ARCHITECTURE

It only takes a wander down Nelson Street to see that Auckland's prior experiences with denser forms of housing haven't always been positive. With the advent of Unitary Plan, however, townhouses, apartments and compact homes necessarily will become more prevalent on the city's streets. This exhibition presents a survey of successful new housing in Auckland - a range of examples that can provide insights into how we should be developing the city.

When: 19-25 September, open all hours  
Where: Atrium on Takutai Square, Britomart  
Cost: Free event (no ticket required)

## MONDAY 19/09



KEYNOTE SPEAKER: STUART HARRISON  
See listing on page 3.

When: Monday 19 September, 6-7pm  
Where: AUT University, Sir Paul Reeves Building, Lecture Theatre WG403  
Cost: Free event (no ticket required)



### SILO 6 EXHIBITIONS: OFF SITE OPENING

Following the Architecture Week opening lecture, stay on for the official 'off site' opening of Architecture Week's Silo 6 exhibitions. Exhibitors include the NZILA, The Roots, Antonia Lapwood and Maui 'Ofamo'oni, A+W•NZ, and a workshop for kids and adults in collaboration with students from the University of Auckland.

When: Monday 19 September, 7-8pm  
Where: Sir Paul Reeves Building Atrium  
Cost: Free event (no ticket required)



## TUESDAY 20/09



### CLUSTER

How did Context Architects transform five sad, drab and leaky 1980s town houses into ultra-modern high-performance eco-homes on 'The Block NZ'? Hear from architect Scott Cracknell and sustainability consultant Alan Hayward about their experiences at Meadowbank and how you can make your home warmer and healthier.

When: Tuesday 20 September, 3.15-4.45pm (drinks 5-6pm)  
Where: Auckland Art Gallery Auditorium  
Cost: Free event (no ticket required)



### RESENE PROFESSIONAL EVENT

Architecture and design professionals are invited to join Resene for colourful interactive entertainment, light refreshments and the launch of a range of 'on-trend' paint hues - fashion colours to provide inspiration for those designing Auckland's future housing. Transport from the Home NZ talk (p.7) will be supplied so both events can be attended.

When: Tuesday 20 September, 5.30-10pm  
Where: Orange Coronation Hall  
Cost: Free event. Registration details at [architectureweek.co.nz](http://architectureweek.co.nz)



### HOME NZ - SMALL HOMES/MEDIUM-DENSITY LIVING

HOME NZ editor Jeremy Hansen discusses innovative ways of approaching small home and higher-density designs with Richard Naish (RTA Studio) and Beth Cameron and Jae Warrander (Makers of Architecture). Presented in association with Altherm Window Systems.

When: Tuesday 20 September, 6-7pm  
Where: Auckland Art Gallery Auditorium  
Cost: Free event. Registration details at [architectureweek.co.nz](http://architectureweek.co.nz)

## WEDNESDAY 21/09



### FAST FORWARD LECTURE: ROGER WALKER, AFFORDABLE ARCHITECTURE

Turrets, towers and portholes are just some of the distinguishing characteristics of Roger Walker's extroverted 1970s architecture. As one of New Zealand's most prominent architects, Roger has designed a great range of housing projects. At this talk, Roger will share some of the insights he has garnered during his 45-year career and discuss how architecture can be made accessible to a wider audience. Brought to you by the University of Auckland School of Architecture and Planning.

**When:** Wednesday 21 September, 6.30-7.30pm  
**Where:** The University of Auckland,  
Engineering Lecture Theatre 439  
**Cost:** Free event. Registration details at  
architectureweek.co.nz

## THURSDAY 22/09



### ENVISION CO-HOUSING BREAKFAST FORUM

Can't afford Auckland? Join Kate and Jacob Otter-Lowe for breakfast and hear how they moved from the realisation that two salaries don't pay for a house in Auckland to the creation of Auckland Cohousing Group (ACG), which is working towards affordable, sustainable and people-friendly housing. A general forum on co-housing follows. Brought to you by Mojo Coffee and Envision. Breakfasts by Claire Inwood available for \$7.

**When:** Thursday 22 September  
7.30am: Breakfast, coffee and networking  
8am: Presentation and Q&A  
9-11am: Forum  
**Where:** Studio One Toi Tū  
**Cost:** Free event. Registration details at  
architectureweek.co.nz



### THE COMMON: SHARED SPACE IN HOUSING

This panel discussion follows on from the successful Artspace / A+W+NZ Panel event in August 2015. Negotiating a conversation around the complexity of issues relating to communal housing is difficult, especially in times of intensification, affordability and housing supply shortage. This panel, made up of Māori and Pasifika academics, practitioners, artists and politicians will discuss whether 'communal space' should be included in our housing typologies, and how financial structures have a bearing on urban form.

**When:** Thursday 22 September, 6:30-8pm  
**Where:** Studio One Toi Tū  
**Cost:** Free event (no ticket required)

## FRIDAY 23/09



### STUDENT EXHIBITIONS OPENING

The launch of a showcase of recent work by architecture and design students at Unitec, AUT and the University of Auckland.

**When:** Opening: Friday 23 September, 5.30pm  
Exhibition runs 23-25 September, 7am-6pm  
**Where:** AUT University, Sir Paul Reeves Building,  
Atrium and Foyer  
**Cost:** Free event (no ticket required)



### THE GREAT DEBATE: ENGINEERS AND ARCHITECTS, EAGLE VS SHARK

At this joint event hosted by the Auckland branches of the New Zealand Institute of Architects and Institute of Professional Engineers New Zealand, architects Jane Aimer and Pip Cheshire will join engineers John Worth and Barry Davidson to argue the proposition that the two professions don't really collaborate but operate as a troubled relationship which is often in need of counselling. The debate will be moderated by Labour MP Jacinda Adern.

**When:** Friday 23 September, 6-7pm  
**Where:** AUT University,  
Sir Paul Reeves Building, WG308  
**Cost:** Free event (no ticket required)



## 24 HOUR STUDENT DESIGN COMPETITION

Organised and run by the Student Architecture Association of New Zealand (SANNZ), the 24 Hour Design Competition is a chance for architecture students to showcase their creativity, meet fellow students from around New Zealand and, importantly, have a great time. The event runs from 5pm, Friday 23 through to the evening of Saturday 24. As with last year's competition, there will be a surprise twist to the brief. The competition is open to students from Victoria University of Wellington, Unitec and the University of Auckland. Competition details will be updated at [architectureweek.co.nz](http://architectureweek.co.nz).

**When:** Friday 23 September, 5pm  
**Where:** Competition launch: AUT University, Sir Paul Reeves Building, lounge space beside WG126  
 Main competition venue: Unitec  
**Cost:** Free event. Registration details at [architectureweek.co.nz](http://architectureweek.co.nz). Registrations close Monday 12 September

## SATURDAY 24/09



### PROFESSIONAL DESIGN CHARRETTE

Running for a full day, the 2016 Architecture Week Professional Design Charrette features ten teams of four investigating a housing-related design challenge.

**When:** Saturday 24 September, 9am-5pm  
**Where:** Jasmx, 2 Marston St, Parnell  
**Cost:** Free event. More information at [architectureweek.co.nz](http://architectureweek.co.nz)



### BUILD YOUR OWN HOME WORKSHOP

Explore the possibilities of a home at this interactive workshop for kids and adults. Piece together models to explore different living conditions. Within different settings - low density, medium density and high density - what would your home look like?

**When:** Saturday 24 & Sunday 25 September, 11am-4pm  
**Where:** Silo 6 Gallery  
**Cost:** Free event (no ticket required)



## RĀ WAIATA

Following on from 'He Wai: A Song?' at Architecture Week 2015, A+W·NZ are honoured to be hosted by Ngati Whatua at Orakei Marae in 2016. In the spirit of manaakitanga (hospitality) Rā Waiata combines the joy of singing waiata (songs) along with some understanding of tikanga (protocol) in relation to powhiri (welcoming). Bring the whole office for some harmonies at a dawn breakfast overlooking the Waitamatā. Brought to you by Architecture+Women·NZ

**When:** Saturday 24 September, 5:45-8:30am  
**Where:** Orakei Marae, 59B Kitemoana St  
**Cost:** General admission \$50; Students \$25  
 Registration details at [architectureweek.co.nz](http://architectureweek.co.nz)

### SATURDAY SERIES



**AKLD IN THE NEW URBAN AGE:** Patrick Reynolds provides an illustrated look at the condition of Auckland in this age of urban transformation. What sort of city can Auckland be? How will recent and pending decisions about transport infrastructure and land-use affect our city's future performance and identity?



**100 YEARS OF STATE HOUSING:** At this talk, Bill McKay, co-author of 'Beyond the State: NZ State Houses from Modest to Modern', will discuss New Zealand's world-leading history of state housing and issues relating to housing shortages today.



**NEW ZEALAND ARCHITECTURE AT VENICE:** Tony van Raat, NZIA Commissioner of 'Future Islands', New Zealand's second Venice Architecture Biennale exhibition, discusses both the importance of participating in the Biennale and the more general charms of Venice.

**When:** Saturday 24 September  
 11-11.45am: AKLD in the New Urban Age  
 12-12.45pm: 100 Years of State Housing  
 1-1.45pm: New Zealand Architecture at Venice  
**Where:** AUT University,  
 Sir Paul Reeves Building, WG126  
**Cost:** Free event (no tickets required)



## SCIENCE CENTRE VISIT WITH ARCHITECTUS

This Architecture Week, take advantage of a rare opportunity to venture inside the University of Auckland Science Centre, one of New Zealand's most contemporary learning and study centres. Occupied by the Schools of Psychology, Environment and Chemistry, the just-finished building is a key part of the University's Science Precinct and a new gateway to the city campus.

When: Saturday 24 September, 9:30am  
Where: University of Auckland Science Centre (meet on the ground floor by the main stair off Symonds Street)  
Cost: Free event; limited to 50 people.  
Registration details: [architectureweek.co.nz](http://architectureweek.co.nz)



## LOCAL WOMEN SPEAK

An opportunity to hear a diverse group of Auckland architecture people speak up on a wide range of varied topics in a friendly and relaxed environment. With the recent Unitary Plan release and the ever-changing cultural, infrastructural and economic landscape, this is a wonderful opportunity to hear and support informed discussion about our built environment.

When: Saturday 24 September, 3-7pm  
Where: AUT University, Sir Paul Reeves Building, WG308  
Cost: Free event (no ticket required)



## GREEN ARCHITECTURE TOUR

To celebrate World Green Building Week and Architecture Week, The New Zealand Green Building Council and the New Zealand Institute of Architects have joined forces to run a walking tour of sustainable buildings in Auckland's CBD. Take a stroll around three of downtown's best commercial buildings while receiving commentary from those that know them best. Light refreshments will be provided at the tour's last stop. Brought to you by Bayleys, Inzide and AGM Publishing.

When: Sunday 25 September, 10.30am  
Where: Fonterra HQ (Jasmax); ASB North Wharf (BVN); ASB Waterfront Theatre (Moller Architects)  
Cost: Free event. Registration details at [architectureweek.co.nz](http://architectureweek.co.nz)



## THE QUARTER SIXTEENTH ACRE DREAM

Join a thought-provoking discussion between leading landscape architects, architects and urban designers about what it's going to take for Auckland to relinquish the quarter-acre dream and transition into higher-density living. Brought to you by the NZILA.

When: Sunday 25 September, 1-2pm  
Where: Auckland Art Gallery Auditorium  
Cost: Free event (no ticket required)



## THE NEW ZEALAND HOME - KEN CROSSON AND GORAN PALADIN

We love our homes, but what do we know about their heritage? On the popular television series 'The New Zealand Home', architect Ken Crosson guided radio sports host Goran Paladin through where, state housing, and sophisticated and significant houses. At this talk, Ken and Goran will describe what they learned as they travelled across the country while drawing on their knowledge of New Zealand's housing history to provide insights into where the future might lie.

When: Sunday 25 September, 3-4pm  
Where: Auckland Art Gallery Auditorium  
Cost: Free event (no ticket required)

## SUNDAY 25/09



## APARTMENT LIVING IN WYNYARD QUARTER

From city to house - Architectus and Athfield Architects discuss their work with Willis Bond and Panuku Auckland on the new apartment buildings that are under construction in the residential precinct of Wynyard Quarter.

When: Sunday 25 September, 12pm  
Where: Willis Bond Showroom, Daldy St, Wynyard Quarter  
Cost: Free event (no ticket required)



# WELLINGTON

EVERY DAY 19-25/09



## NAWIC PHOTOGRAPHY EXHIBITION

A free public photographic exhibition at two venues highlighting the unseen achievements of women in construction. Brought to you by the National Association of Women in Construction (NAWIC) – a voluntary organisation which supports and encourages women in all areas of the construction industry.

### VENUE 1

When: 12-25 September, 8.30am-4.55pm  
Where: New Zealand Post House, 7 Waterloo Quay

### VENUE 2

When: 19-25 September, 10am-5pm  
Where: 17 Tory Street  
Cost: Free event

MONDAY 19/09



## ARCHITECTURAL PHOTO COMPETITION

In the lead up to Architecture Week, the Smarter Building Centre is running an architectural photo competition. There are three categories: Junior, Youth and Amateur. Entries close 4pm, Sunday 18 September. More details at [architectureweek.co.nz](http://architectureweek.co.nz)



## ARCHITECTURE DISRUPTORS

Join a free lunchtime talk with teams of progressive young designers who are disrupting the way architecture is delivered. The panel includes First Light Studio, Makers of Architecture and thesis students at Victoria University of Wellington's School of Architecture. Solutions to New Zealand's housing crisis cannot be delivered with a situation-normal approach: one house, built by one builder built over one year. These practitioners are completely re-thinking the delivery process. Brought to you by PrefabNZ.

When: Monday 19 September, 12.30-1.30pm  
Where: City Gallery Wellington  
Cost: Free event (no ticket required)



fb.com/NZIA.WLG



CITY TALKS: WORSHIP: A HISTORY OF  
NEW ZEALAND CHURCH DESIGN

Historian Michael King described churches as "New Zealand's one contribution to world architecture" and yet, despite this, the stories behind many church designs remain relatively unknown. At this talk, Bill McKay, architectural historian and author of 'Worship: A History of New Zealand Church Design', will discuss fascinating church histories with a special focus on Wellington. Brought to you by the NZIA - Wellington Branch in partnership with City Gallery Wellington.

When: Monday 19 September, 6pm  
Where: City Gallery Wellington  
Cost: Free event (no ticket required)

TUESDAY 20/09



A+W•NZ EXPRESS SERIES

Join Architecture+Women•NZ in a celebration of work by thesis students at Victoria University's School of Architecture. Six students will be challenged to present their thesis projects in fast-paced, six-minute presentations.

When: Tuesday 20 September, 12.30-1.30pm  
Where: City Gallery Wellington  
Cost: Free event (no ticket required)



FILM NIGHT: 'MY ARCHITECT'

A must-see for architects and architecture fans, 'My Architect' is a critically acclaimed film by Nathaniel Kahn, son of renowned architect Louis Kahn, who designed noteworthy buildings in California, Texas and Bangladesh. Brought to you by Architectural Designers New Zealand.

When: Tuesday 20 September, movie starts 6.30pm  
Free beverage available for ticket holders from 5.30pm  
Where: Lighthouse Theatre Cuba, 29 Wigan Street  
Cost: Free event. To book, email  
maeghan@adarchitecture.nz

WEDNESDAY 21/09



COFFEE WITH AN ARCHITECT

In Wellington, some coffee shops are integral parts of the city. Nikau, at City Gallery Wellington, and Cuba Street's Loretta are certainly two that fit that bill. This event provides a chance to hear two Wellington architects discuss their designs of these cafes. Gerald Parsonson (Parsonson Architects) will talk about the elegant refit of Loretta while across town Mary Daish (Mary Daish Architect) will talk at the venerable Nikau. Mix with the regulars, grab a complimentary coffee and a treat, and start your day with some good conversation. Brought to you by the NZIA - Wellington Branch in partnership with Nikau and Loretta.

When: Wednesday 21 September, 8-9am  
Where: Nikau, City Gallery Wellington  
Loretta Cafe, 181 Cuba St  
Cost: Free event. Booking details at  
architectureweek.co.nz



ALTERNATIVE MARKET HOUSING FUTURES

A free lunchtime talk about future housing modes that are purpose-designed for papakāinga and social and community clients that can't access market-led options. Representatives from Roger Walker Architecture, Community Housing Aotearoa, Dwell Housing Trust, Te Aro Pā and Te Tumu Paeroa will participate in a discussion about the recent Te Aro Pā project in Evan's Bay. Chaired by Guy Marriage of Victoria University of Wellington School of Architecture. Brought to you by HOME NZ and PrefabNZ.

When: Wednesday 21 September, 12.30-1.30pm  
Where: City Gallery Wellington  
Cost: Free event (no ticket required)



KEYNOTE SPEAKER: STUART HARRISON

See listing on page 3.

When: Wednesday 21 September, 5.30-6.30pm  
Where: City Gallery Wellington  
Cost: Free event (no ticket required)

## THURSDAY 22/09



### NEW DREAMLAND

The dream of a pavlova paradise - owning your own home on a quarter-acre section - no longer exists. The size of the section has halved, the size of the house has doubled, the price has increased exponentially and the family unit has exploded - all of which is making home ownership a nightmare for many New Zealanders. This lunchtime talk led by architects and academics will explore local and international alternatives to the detached dwelling on a quarter-acre section. Brought to you by The Architectural Centre.

When: Thursday 22 September, 12.30-1.30pm  
 Where: City Gallery Wellington  
 Cost: Free event (no ticket required)



### NAWIC 20 YEARS IN NEW ZEALAND CELEBRATION

This year NAWIC, the National Association of Women in Construction, is celebrating its 20th year in New Zealand. As an accompaniment to the photographic exhibition showing women in construction-related workplaces (p.15), NAWIC is also extending an invitation to an evening celebration with special guest speaker Helen Anderson, Chair of BRANZ.

When: Thursday 22 September, 5.30pm  
 Where: 17 Tory Street  
 Cost: Free event (no ticket required)

## FRIDAY 23/09



### ARCHITECTURE DESIGNERS DEBATE

A free lunchtime debate between architecture industry representatives who will identify and discuss local housing issues, challenges and opportunities. All welcome. Brought to you by the Architectural Designers New Zealand.

When: Friday 23 September, 12.30-1.30pm  
 Where: City Gallery Wellington  
 Cost: Free event (no ticket required)



## OPEN STUDIOS

Ever wondered what goes on in an architecture studio? Now's your chance to find out! Take a self-guided tour of these local practices:

- ANDREW SEXTON ARCHITECTURE, Level 2, Hope Gibbons Building, 7-11 Dixon Street
- ARCHITECTURE WORKSHOP, Level 3, The Dominion Building, 78 Victoria Street
- BEVIN + SLESSOR ARCHITECTS, Level 2, Ken Chan House, 90-92 Dixon Street
- DESIGN GROUP STAPLETON ELLIOT, Level 3, 89 Courtenay Place
- HERRIOT + MELHUIH: ARCHITECTURE, Level 1, 21 Blair Street
- JASMAX, Level 1, Grant Thornton House, 215 Lambton Quay
- JERRAM TOCKER BARRON ARCHITECTS, Level 1, 28 Cuba Street
- MAKERS OF ARCHITECTURE, 115 Taranaki St
- OPUS, Level 9, Majestic Centre, 100 Willis Street
- STUDIO PACIFIC ARCHITECTURE, Level 2, 74 Cuba Street
- TENNENT BROWN, Level 6, Hope Gibbons Building, 7-11 Dixon Street
- WARREN AND MAHONEY, 87 The Terrace
- WRAIGHT + ASSOCIATES, Level 2, 282 Wakefield Street

When: Friday 23 September, 3.30-6.30pm  
 Cost: Free event (no ticket required)

## SATURDAY 24/09



### WATERFRONT DISCOVERY TOUR

Join a guided walking tour of architectural icons on Wellington's waterfront. With commentary by the people that know them best. Grab an ice-cream or coffee along the way - perfect for families. Come prepared for all weather. Brought to you by PrefabNZ, the NZIA and NAWIC.

When/Where: 11-11.45am: Waitangi Park  
 12-12.45pm: Clyde Quay Wharf  
 1-2pm: Sculpture Walk  
 2-2.45pm: One Market Lane  
 3-3.45pm: Wharewaka  
 3.45-4pm: Crayfish Loos  
 Cost: Free event (no ticket required)

# CHRISTCHURCH

EVERY DAY 19-25/09



## 'HUMBLE BEGINNINGS' EXHIBITION

What happens when architects or architectural graduates design their own homes? 'Humble Beginnings' (19-25 September) looks at a range of new homes, at various stages of completion, which have been designed by a younger generation of smart architects. Find out the stories behind the designs, discover what it's like to wear the hat of client and architect at the same time, while dealing with complex site and budgetary constraints.

When: Opening: Monday 19 September, 6pm  
Where: NZIA Branch Rooms, 65 Cambridge Terrace  
Cost: Free event (no ticket required)

MONDAY 19/09



OPEN STUDIO #1 - OPUS  
12 Moorhouse Avenue  
Monday 19 September, 12.30-1.30pm

Architects open their offices to allow the public to experience how creative offices work, to see projects in progress, and to have their questions answered. All Open Studio events are free (no ticket required).

TUESDAY 20/09




## HOME NZ AND WOMEN IN ARCHITECTURE DISCUSSION

HOME NZ and the Canterbury Branch of A+W·NZ present a panel discussion about housing - including completed projects, issues and ideas for the future, and what it means for Christchurch. Panelists from Christchurch and other parts of the South Island will present a housing project they have completed before an informal discussion led by convenor Jane Rooney.

When: Tuesday 20 September, 6-7.30pm  
Where: Warren and Mahoney, 254 Montreal Street  
Cost: Free event (no ticket required)

 [fb.com/NZIA.CHCH](https://www.facebook.com/NZIA.CHCH)

 [@nzia\\_canterbury](https://www.instagram.com/nzia_canterbury)



OPEN STUDIO #2 - JASMAX  
47 Riccarton Road  
Tuesday 20 September, 12.30-1.30pm

## WEDNESDAY 21/09



### DESIGN FORUM SERIES PRESENTATION

Hear three architectural practices, Architectus, Sheppard & Rout and Warren and Mahoney, make presentations about the challenges and potential for medium and high-density residential development in Christchurch. The practices will describe the design principles and architectural philosophies that guide their work in large scale housing projects, including the Breathe Village development of the East Frame and Cranmer Court. The author of each project will give a brief outline of the project and be available to answer questions.

When: Wednesday 21 September, 6-7.30pm  
Where: Ara Institute of Canterbury, City Campus, DL Lecture Theatre  
Cost: Free event (no ticket required)



OPEN STUDIO #3 - CYMON ALLFREY ARCHITECTS  
195 Peterborough St  
Wednesday 21 September, 12.30-1.30pm

## THURSDAY 22/09



OPEN STUDIO #4 - SHEPPARD AND ROUT  
104 Salisbury Street  
Thursday 22 September, 10am-2pm



KEYNOTE SPEAKER: STUART HARRISON  
See listing on page 3.

When: Thursday 22 September, 6-7pm  
Where: Christchurch Arts Centre, Great Hall  
Cost: Free event (no ticket required)

## FRIDAY 23/09



OPEN STUDIO #5 - STEPHENSON AND TURNER  
102 Cashel Street  
Friday 23 September, 12.30-1.30pm

## WEEKEND EVENTS 24-25/09



OPEN STUDIO #6 - DAVID SMITH ARCHITECT  
105B Office Road Merivale;  
Saturday 24 September, 10am-2pm



OPEN STUDIO #7 - WARREN AND MAHONEY  
254 Montreal St  
Saturday 24 September, 10am-2pm



FUTURE HOUSE WORKSHOP  
Design Workshop for Architecture Graduates

At this two-day design workshop for graduates led by architects Michael O'Sullivan (Auckland and Lyttelton) and Andrew Sexton (Wellington and Kapiti), participants will explore pragmatic, affordable and inspiring approaches to residential living. The workshop will culminate in a public exhibition at NZIA Branch Rooms.

When: Saturday 24 and Sunday 25 September, 11am-4.30pm  
Where: NZIA Branch Rooms, 65 Cambridge Terrace  
Cost: Free event; limited to 24 graduates.  
Registration details: [architectureweek.co.nz](http://architectureweek.co.nz)



HUMBLE BEGINNINGS EXHIBITION CLOSING  
(See page 21 for details)

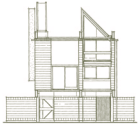
When: Sunday 24 September, 5.30pm  
Where: NZIA Branch Rooms, 65 Cambridge Terrace  
Cost: Free event (no ticket required)



FUTURE HOUSE EXHIBITION OPENING  
(See above for details)

When: Sunday 24 September, 6pm  
Where: NZIA Branch Rooms, 65 Cambridge Terrace  
Cost: Free event (no ticket required)

Architecture Week's programme of mostly free, publicly accessible events is made possible through the generous contributions of a number of supporters, including:



THE WARREN TRUST



Auckland



Wellington



Christchurch





New Zealand  
Institute of Architects  
Incorporated