

te ātea

A common place, a place where everyone is welcome;

A collaborative and creative urban space for our Tauranga community to gather, interact, and exchange goods, ideas and kai;

The idea of varying scales and occupiable flexible spaces to facilitate artists / events / exchange / displays either for the entire event or temporarily. E.g. 'bump spaces' and small 'booths' within the laneway for artists to display works / exchange ideas / buy and sell artwork / stages for performance

experiential



1. entrance
portal into space • framing the entrance



2. gallery
frames – flexible – rotating • structure & fluidity • people move through • experience • interactive



3. transition
informal • overflow from gallery • pause for change in volume • spill out seating if required • change in feeling



4. performance
temporary stage • potential for active art piece • raised platform for informal seating if required • interactive zone for artists / exhibits



5. eat/kai
people eating – mingle – gather • raised seating • viewing performances & projection

spatial framework



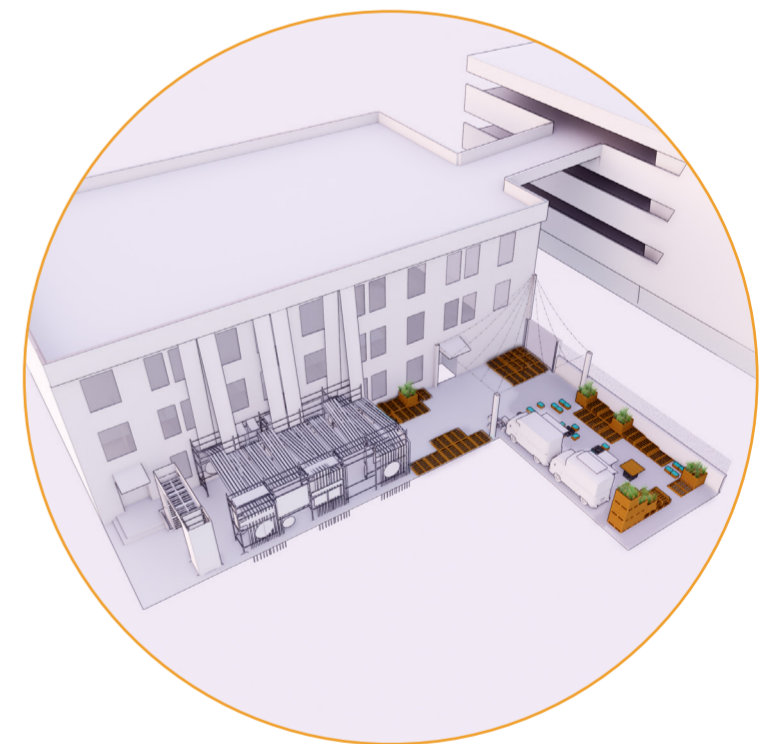
legend

- (a) Framed portal entry to ātea constructed from donated timber pallets and planted with donated nursery plants endemic to Tauranga moana
- (b) 'Pouwhenua' scaffolding tower wrapped in fabric with mahi toi pattern by local artist. Potential to be backlit
- (c) Fabric material tied to rooftop carpark, stretched & tied to scaffolding in laneway. Adds vibrancy & colour, creates a sense of volume and will project laneway presence to the wider city. Potential for public engagement with more material added at low level, weaving or painting and screenprinting.
- (d) Plywood rotating or static screens attached to scaffolding. To display art, signage or be used as tables for display of goods for exchange or sale.
- (e) Scaffolding framing, able to incorporate open portions for 'stalls' or artists to occupy, can vary in size and frequency throughout the gallery due to flexible nature of scaffolding.
- (f) Furniture that can be reordered and occupied by public as required for eating or viewing performance space
- (g) High level lighting above performance space, suspended from columns (either timber or scaffolding)
- (h) Potential to have a projection onto carparking buildings blank facade (artist tbc). Can be interactive or static
- (i) Opportunity for artist to create work in-situ throughout the event. Space can facilitate external creative groups eg The Roots Creative Entrepreneurs from Auckland.
- (j) Stage that can be used for performances, informal seating, interactive zone for artists or exhibits
- (k) Staggered to break up wall and provide seating for eating kai, viewing performances etc
- (l) Can be accessed via stairs to Spring street
- (m) Food services with trucks & stalls

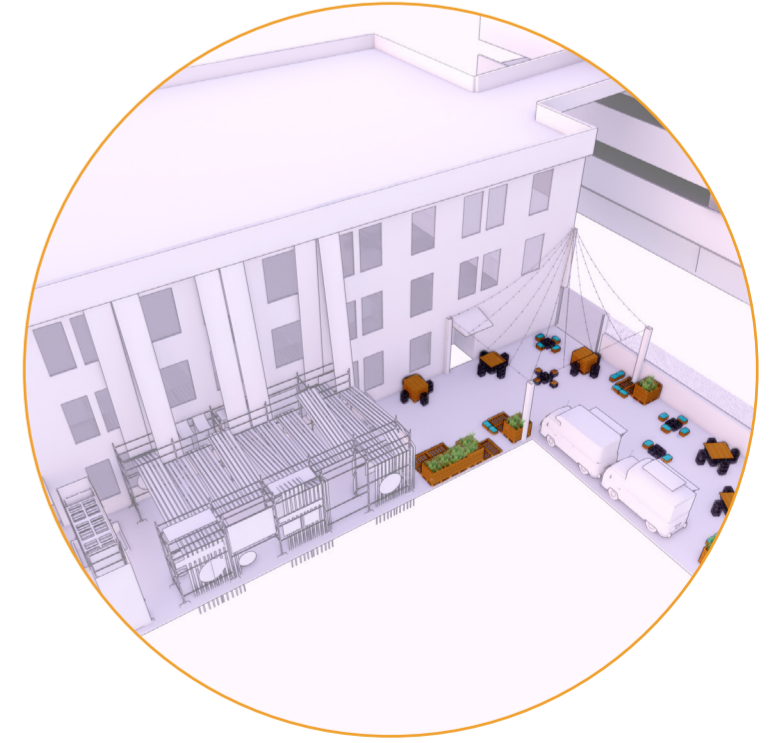
future collaborators

- Linda Munn mixed media
- Maraea Timutimu mixed media
- Darcell Apelu moving image
- Que Bidois mixed media
- Kalou graphics
- Robyn Williams graphics
- Owen Dippie painter

programming



entertainment & concert



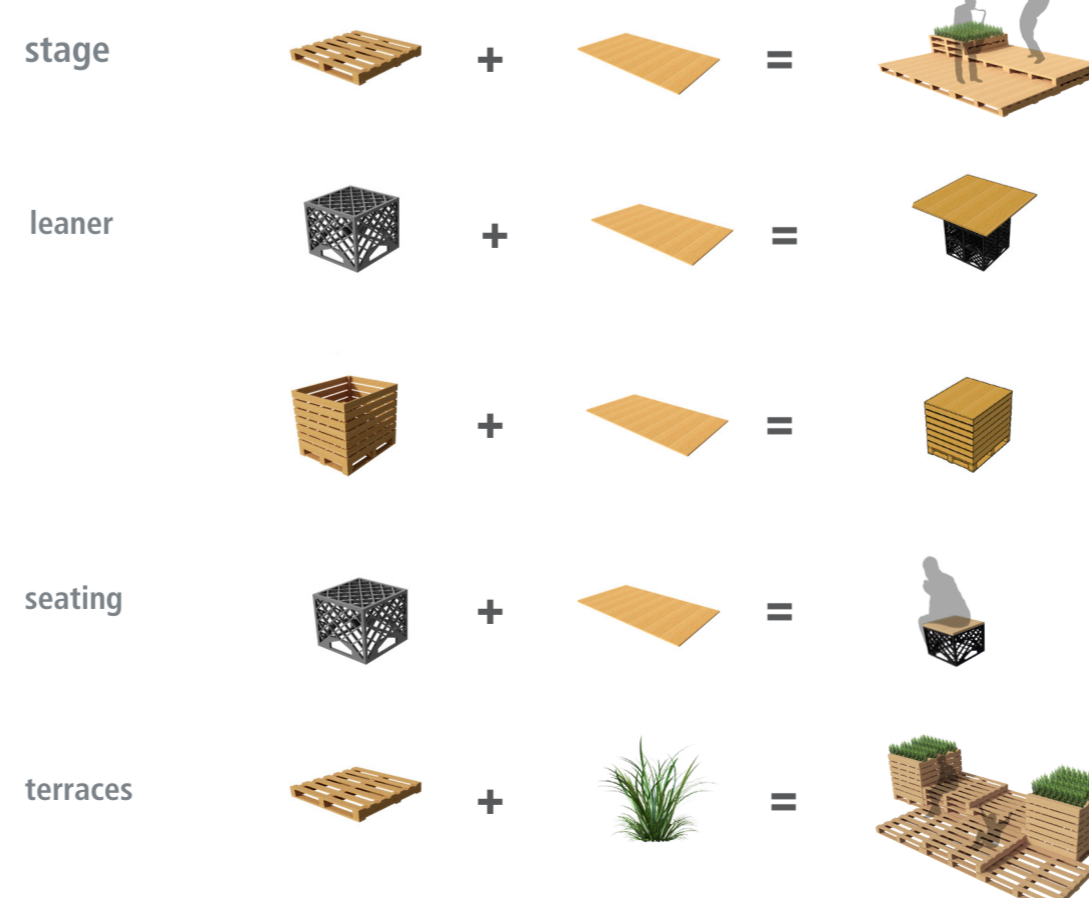
dining and night theatre

toolkit

materials



furniture (re)assembly



reuse & upcycle

- material**
 - schools for sewing,
 - decomposable weed matting
 - venue hire for drapery
 - if wind break material is used- returned to orchard
- seating (pallets / kiwifruit crates / plywood)**
 - kiwifruit crates can be returned
 - seating repurposed at our place / around the community
 - plywood donated to schools / playcentres / community facilities doing building
- rotating panels (plywood)**
 - Can be used as display boards throughout community / at our place
- stage (plywood & pallets)**
 - Stage donated to community group
 - Used at our place
- scaffold**
 - rented item returned to supplier
- lighting**
 - rented item returned to supplier